



► ENROLLMENT PROJECTIONS

HOLLISTER SCHOOL DISTRICT

NOVEMBER 16, 2021

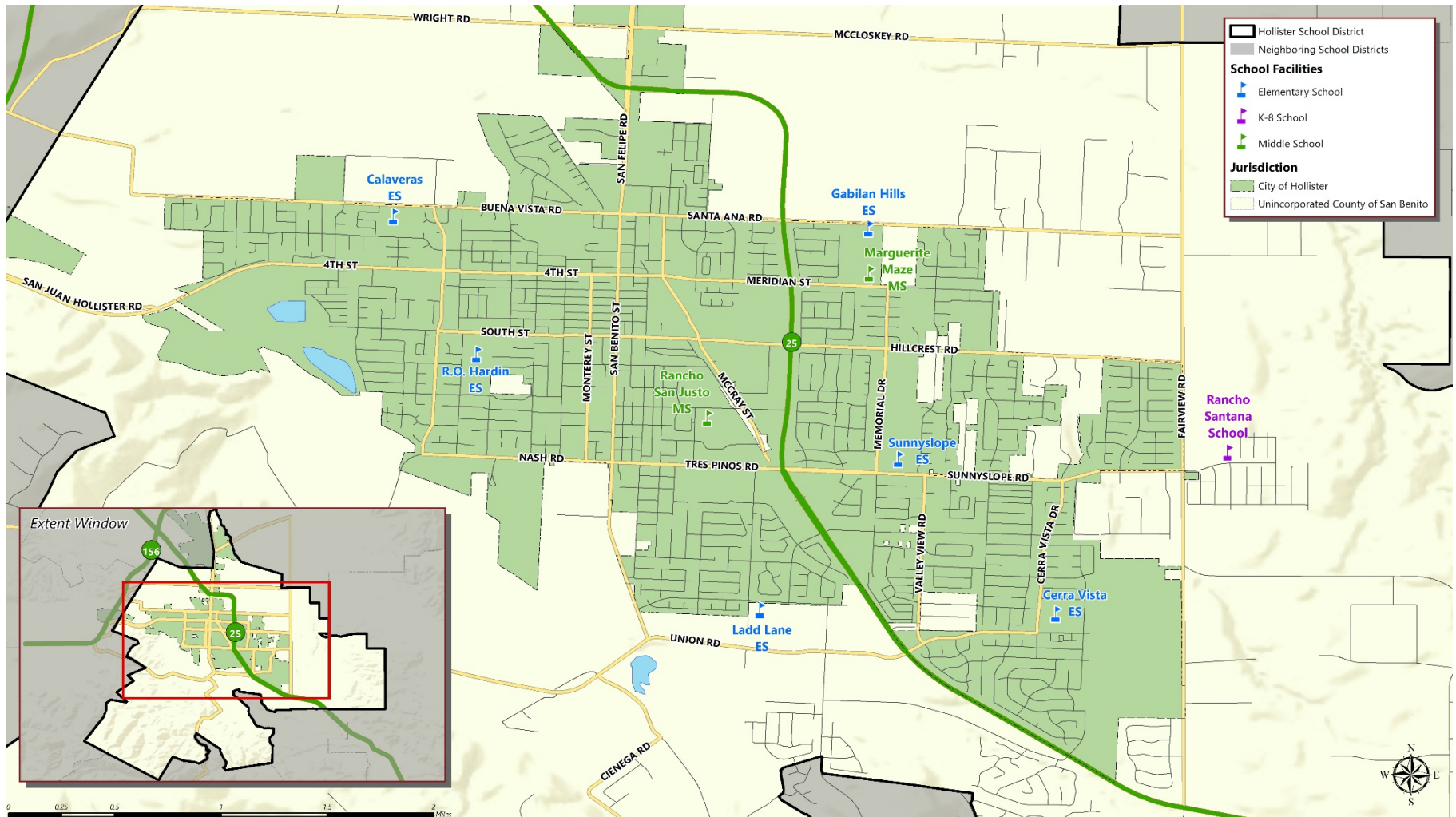


COOPERATIVE
STRATEGIES
ASSESS • PLAN • FUND • BUILD

► OUTLINE

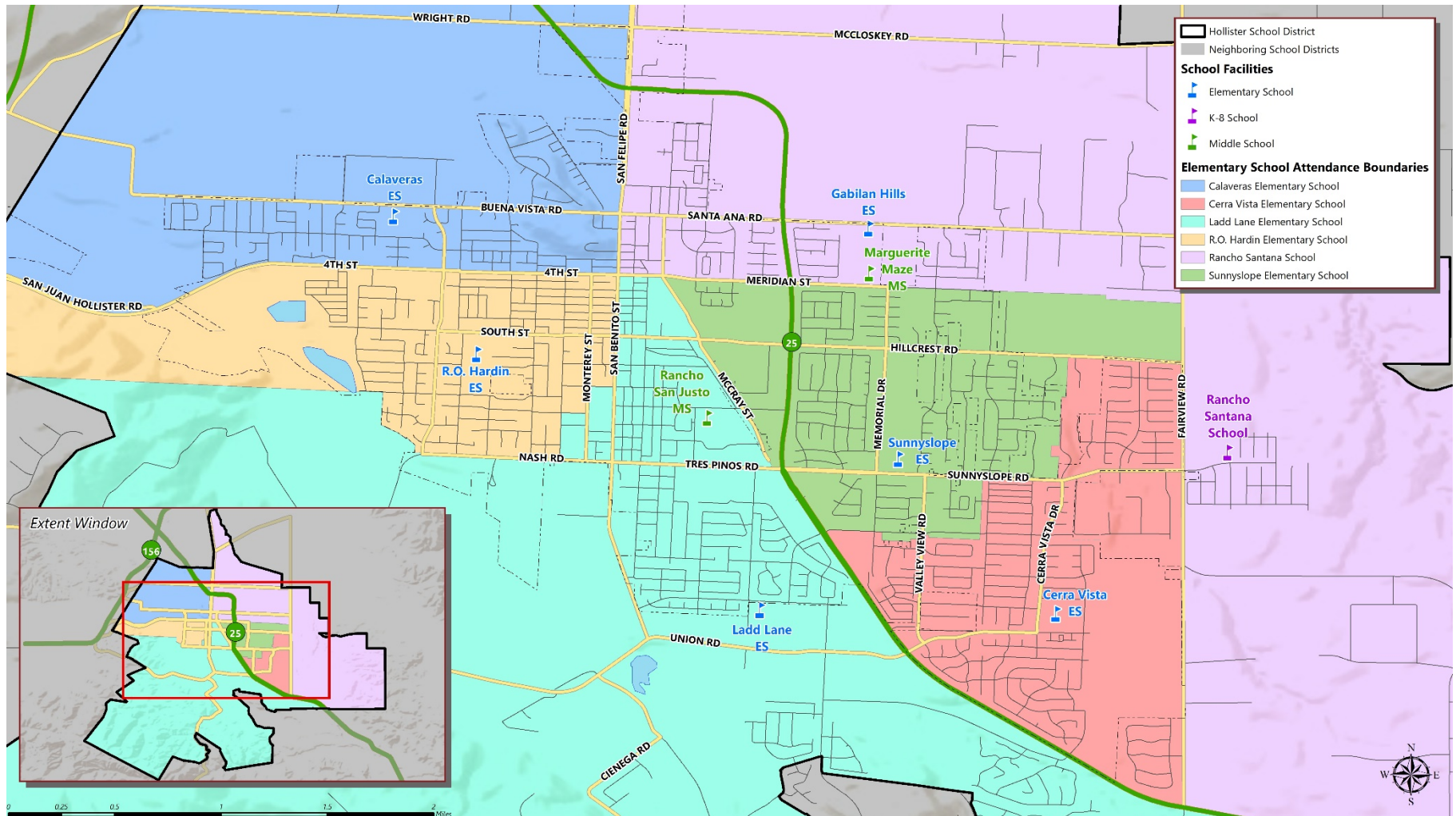
- 1 Introduction
- 3 Overview of Historical Enrollment
- 6 Inputs and Methodology
- 8 Districtwide Enrollment Projection

► GEOGRAPHIC PROFILE

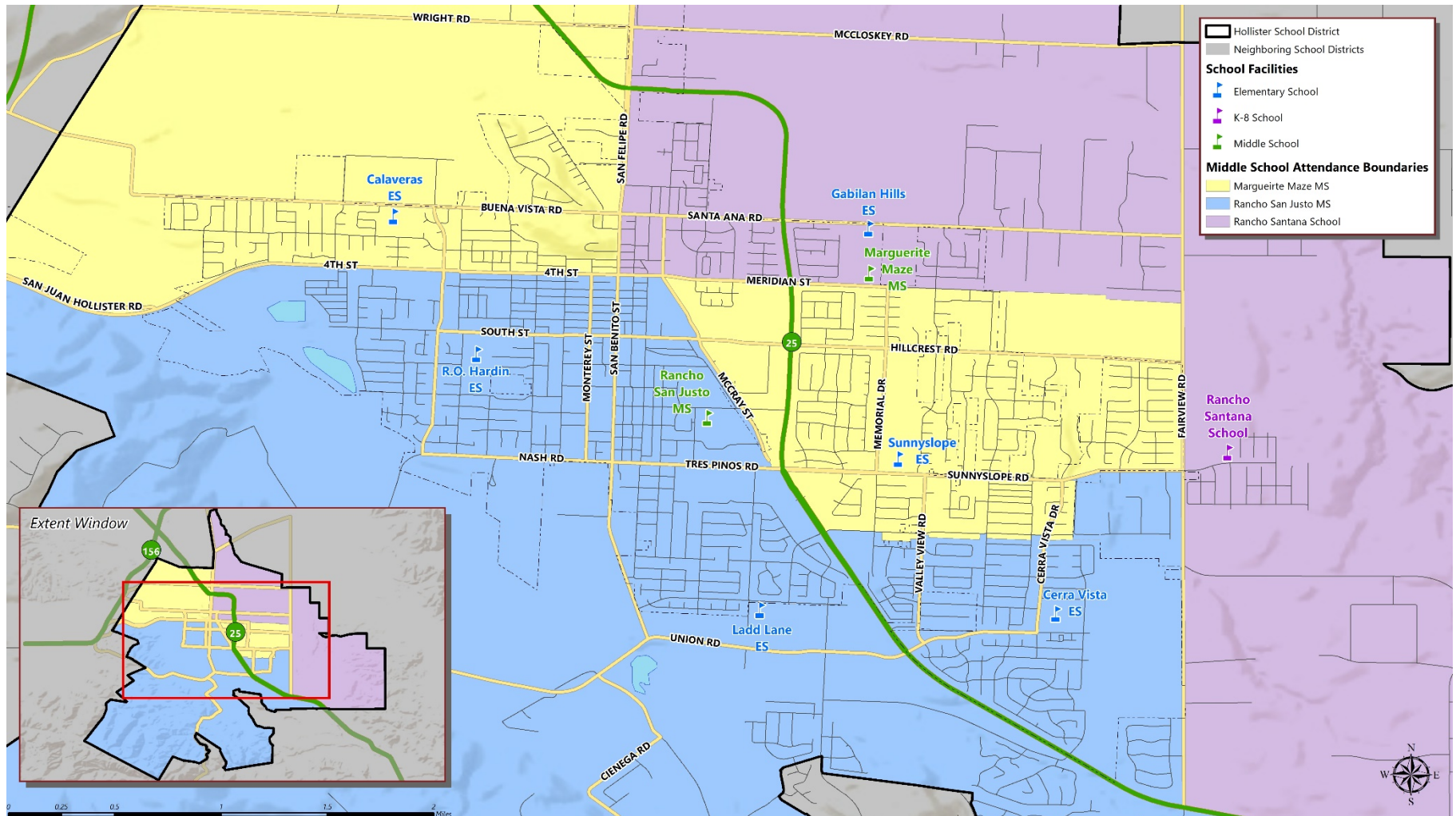


▶ ATTENDANCE BOUNDARIES

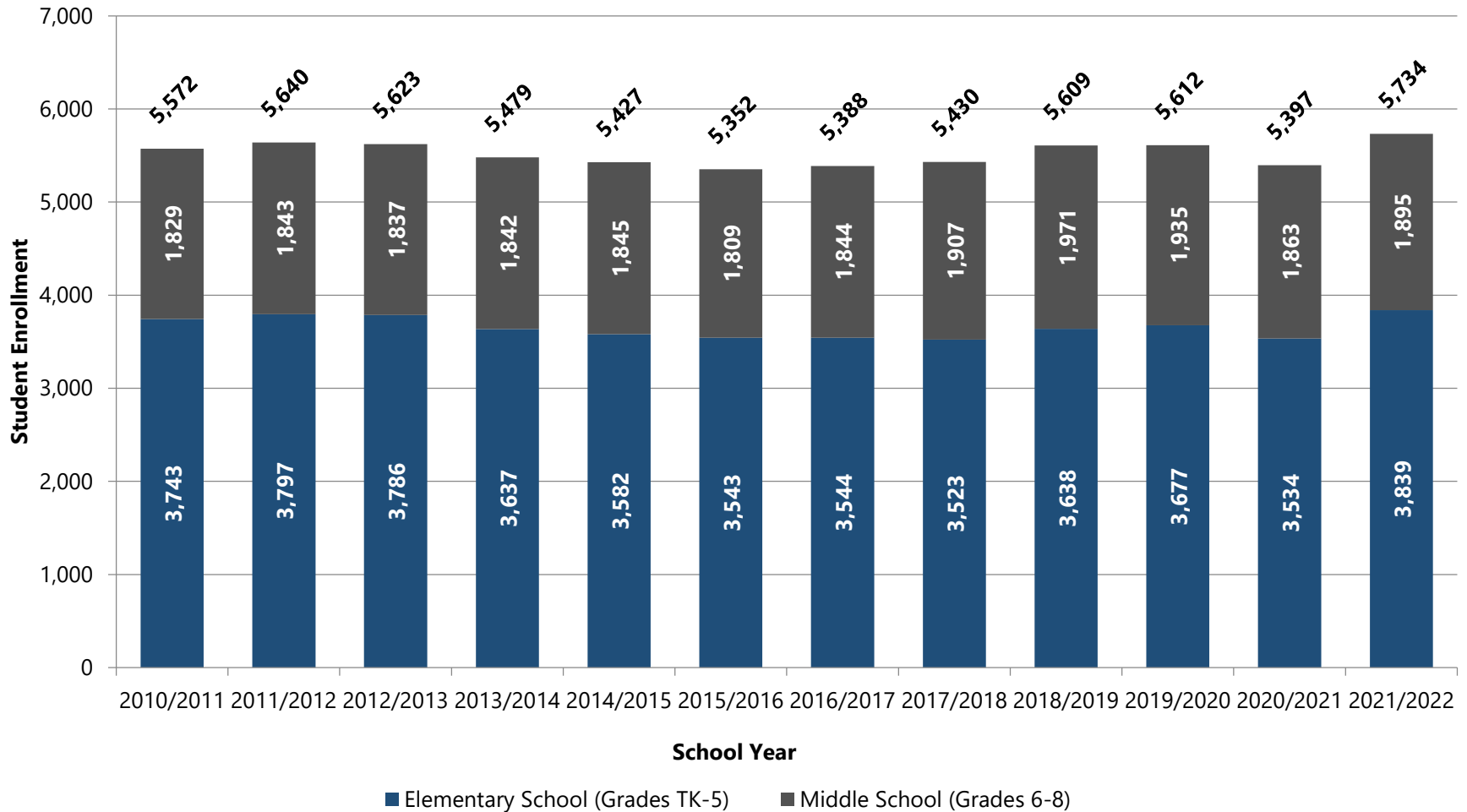
ELEMENTARY SCHOOLS



► ATTENDANCE BOUNDARIES MIDDLE SCHOOLS



► HISTORICAL ENROLLMENT OVERVIEW BY SCHOOL LEVEL



[1] School year 2020/2021 enrollment is based on data provided by the School District. All other years are based on CBEDs.

► HISTORICAL ENROLLMENT OVERVIEW
INTER-DISTRICT TRANSFER TRENDS

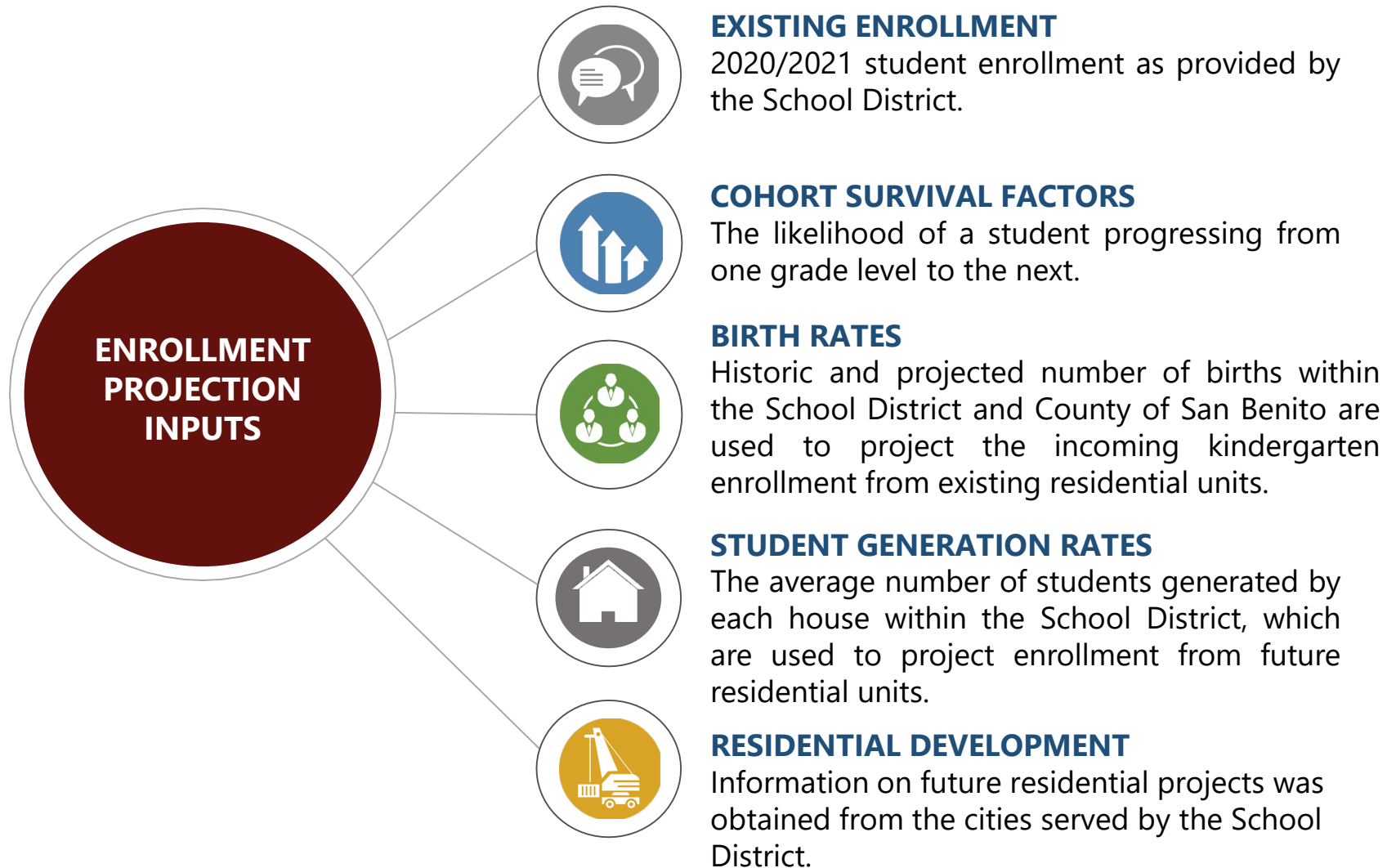
Item	2017/2018	2018/2019	2019/2020	2020/2021
Total Incoming Transfers ^[1]	218	199	247	181
Total Enrollment	5,430	5,609	5,612	5,397
Percentage	4.01%	3.55%	4.40%	3.35%

► HISTORICAL ENROLLMENT OVERVIEW
INCOMING IDTS SCHOOL YEAR 2020/2021

	TK	K	1	2	3	4	5	6	7	8	Total
Calaveras School	0	2	3	3	0	3	0	3	2	1	17
Cerra Vista School	1	1	0	0	1	2	3	-	-	-	8
Gabilan Hills	0	0	0	2	1	1	0	-	-	-	4
Ladd Lane Elementary	1	2	5	1	2	2	1	-	-	-	14
R. O. Hardin School	0	1	1	1	0	2	0	-	-	-	5
Sunnyslope School	0	2	2	3	3	3	0	2	-	-	15
Marguerite Maze School	-	-	-	-	-	-	-	4	10	4	18
Rancho San Justo School	-	-	-	-	-	-	-	9	4	11	24
Hollister Dual Language Academy	2	5	5	9	6	10	6	7	3	6	59
Accelerated Achievement Academy	0	0	0	0	0	1	1	3	1	4	10
Non-Public School		1		2			2	2			7
Total	4	14	16	21	13	24	13	30	20	26	181

► ENROLLMENT PROJECTIONS

INPUTS



► HISTORICAL ENROLLMENT OVERVIEW
INTER-DISTRICT TRANSFER TRENDS

Schools	Grade Level				
Elementary School	K to 1st	1st to 2nd	2nd to 3rd	3rd to 4th	4th to 5th
Calaveras ES	100.16%	106.40%	94.98%	105.14%	113.77%
Cerra Vista ES	103.56%	98.77%	96.23%	103.66%	100.44%
Ladd Lane ES	100.15%	104.76%	100.24%	99.84%	103.59%
R.O. Hardin ES	98.54%	102.05%	109.73%	101.26%	101.91%
Rancho Santana K8	102.48%	97.27%	98.96%	99.75%	98.31%
Sunnyslope ES	96.72%	105.11%	101.63%	106.73%	102.18%
Middle School	5th to 6th	6th to 7th	7th to 8th		
Marguerite Maze MS	99.51%	103.58%	96.95%		
Rancho San Justo MS	101.95%	100.42%	99.89%		
Rancho Santana K8	99.76%	101.16%	99.22%		

[1] Districtwide four-year weighted average cohort calculated based on data provided by the School District.

► INPUTS AND METHODOLOGY

BIRTH RATES

Birth Year	Actual Births By ZIP Code	Actual/Projected County Births	Birth Rate	Corresponding Kindergarten Year	Actual/Projected Kindergarten Enrollment
2005	828	N/A	N/A	2010/2011	632
2006	810	N/A	97.83%	2011/2012	666
2007	800	N/A	98.77%	2012/2013	668
2008	760	N/A	95.00%	2013/2014	625
2009	697	N/A	91.71%	2014/2015	595
2010	671	N/A	96.27%	2015/2016	577
2011	718	N/A	107.00%	2016/2017	682
2012	649	N/A	90.39%	2017/2018	688
2013	691	N/A	106.47%	2018/2019	758
2014	651	N/A	94.21%	2019/2020	744
2015	664	N/A	102.00%	2020/2021	697
2016	716	N/A	107.83%	2021/2022	753
2017	685	N/A	95.67%	2022/2023	740
2018	725	N/A	105.84%	2023/2024	793
2019	736	781	101.52%	2024/2025	831
2020	N/A	744	95.26%	2025/2026	821
2021	N/A	855	114.92%	2026/2027	929
2022	N/A	739	86.43%	2027/2028	921

[1] Actual births by ZIP Codes 95023 & 95024 provided by the CDPH

[2] Actual and projected births documented for the County provided by DOF.

[3] Projected kindergarten enrollment includes students generated from future residential units.

► **INPUTS AND METHODOLOGY**
STUDENT GENERATION RATES (“SGRs”)

SINGLE FAMILY DETACHED UNITS^[1]

Grade Level	SFD SGR	Students Per 100 Homes
Elementary School (TK-5)	0.2575	25.75
Middle School (6-8)	0.0870	8.70
Total	0.3445	34.45

MULTIFAMILY ATTACHED UNITS^[1]

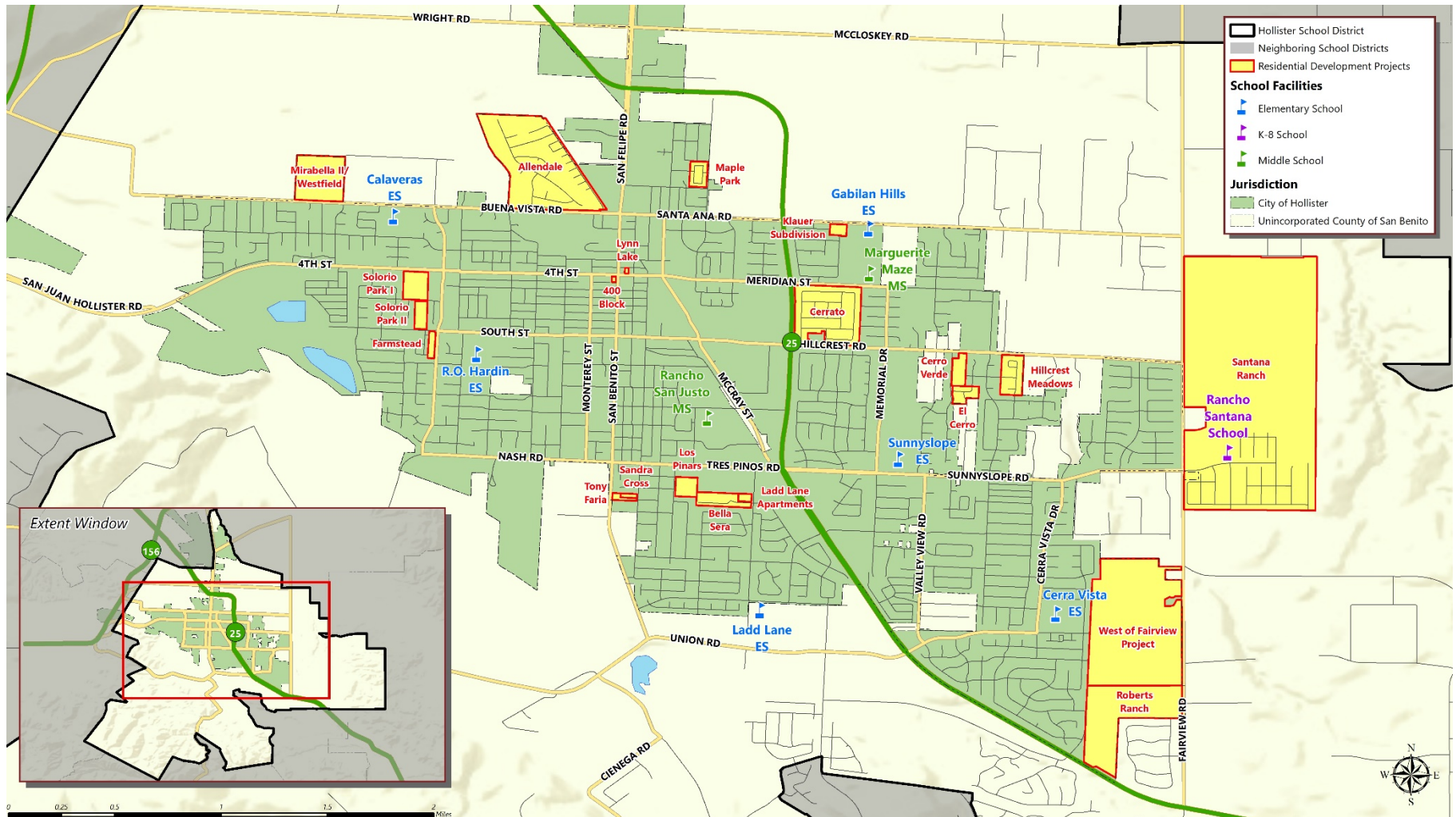
Grade Level	MFA SGR	Students Per 100 Homes
Elementary School (TK-5)	0.1727	17.27
Middle School (6-8)	0.0863	8.63
Total	0.2590	25.90

► **INPUTS AND METHODOLOGY**
RESIDENTIAL DEVELOPMENT

Year	Single Family Detached Units	Multifamily Attached Units	Total Residential Units
2020/2021	211	33	244
2021/2022	208	111	319
2022/2023	238	130	368
2023/2024	303	310	613
2024/2025	199	211	410
2025/2026	180	30	210
2026/2027	72	0	72
2027/2028	0	0	0
Total	1,411	825	2,236

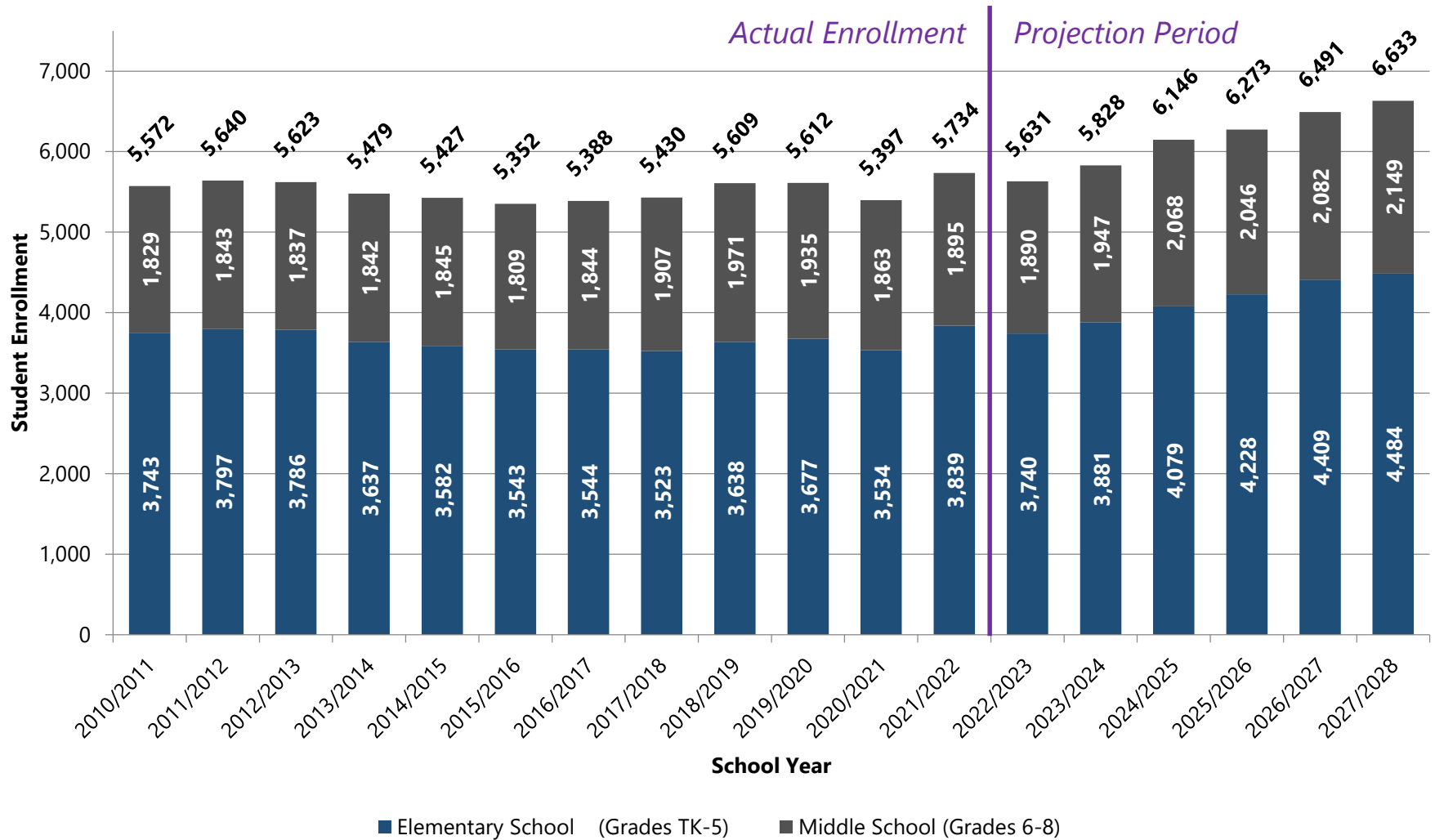
► INPUTS AND METHODOLOGY

RESIDENTIAL DEVELOPMENT



► ENROLLMENT PROJECTION

DISTRICTWIDE STUDENT ENROLLMENT PROJECTIONS BY SCHOOL YEAR



► **ENROLLMENT PROJECTION**
BY GRADE

Grade	2020/21	2021/22	2022/23	2023/24	2024/25	2025/26	2026/27	2027/28
Transitional Kindergarten	146	181	158	170	178	172	199	196
Kindergarten	551	601	582	623	653	649	730	725
Grade 1	526	620	608	601	650	675	664	740
Grade 2	564	557	595	643	643	687	705	687
Grade 3	568	581	563	606	662	655	691	703
Grade 4	639	623	609	605	656	707	693	724
Grade 5	540	676	625	634	637	683	728	708
Grade 6	609	584	690	659	675	672	713	755
Grade 7	623	633	577	700	677	687	678	716
Grade 8	631	678	623	587	716	687	691	678
Total	5,397	5,734	5,631	5,828	6,146	6,273	6,491	6,633



Questions

