



► 2020 CENSUS AND REDISTRICTING

HOLLISTER SCHOOL DISTRICT

December 14, 2021



COOPERATIVE
STRATEGIES
ASSESS • PLAN • FUND • BUILD

► DISTRICT DEMOGRAPHICS
2020 CENSUS DATA

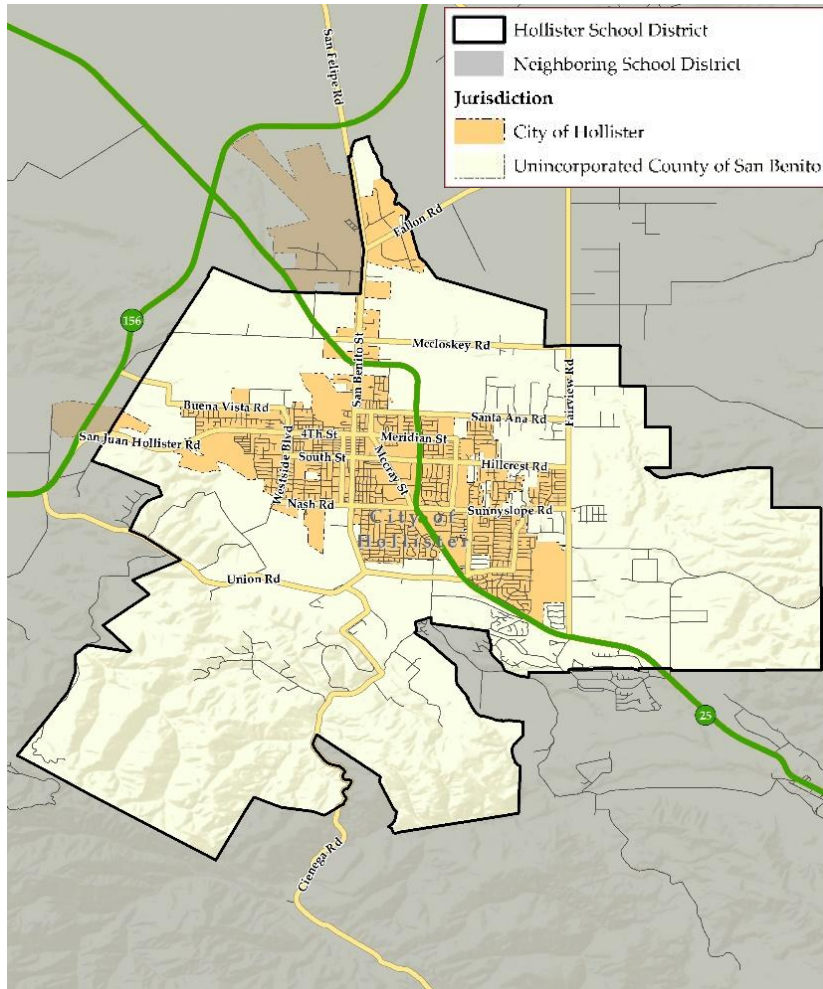


- Validated redistricting data was finalized by the California Department of Finance on September 27, 2021.
- This data showed substantial changes in the area served by Hollister School District (“HSD”) from 2010 to 2020, including:
 - Overall population growth of over 7,788 (18.2%)
 - Total Variance of 14.4% based on 2020 Census (*Out of Compliance*)

Trustee Area	2010 Census		2020 Census		Change	
	Total	Variance	Total	Variance	Population	Percent
Trustee Area 1	8,550	0.2%	10,095	0.0%	1,545	18.1%
Trustee Area 2	8,503	-0.4%	9,998	-0.9%	1,495	17.6%
Trustee Area 3	8,559	0.3%	11,003	9.0%	2,444	28.6%
Trustee Area 4	8,544	0.1%	9,555	-5.3%	1,011	11.8%
Trustee Area 5	8,522	-0.2%	9,815	-2.8%	1,293	15.2%
Total Population	42,678	0.7%	50,466	14.4%	7,788	18.2%

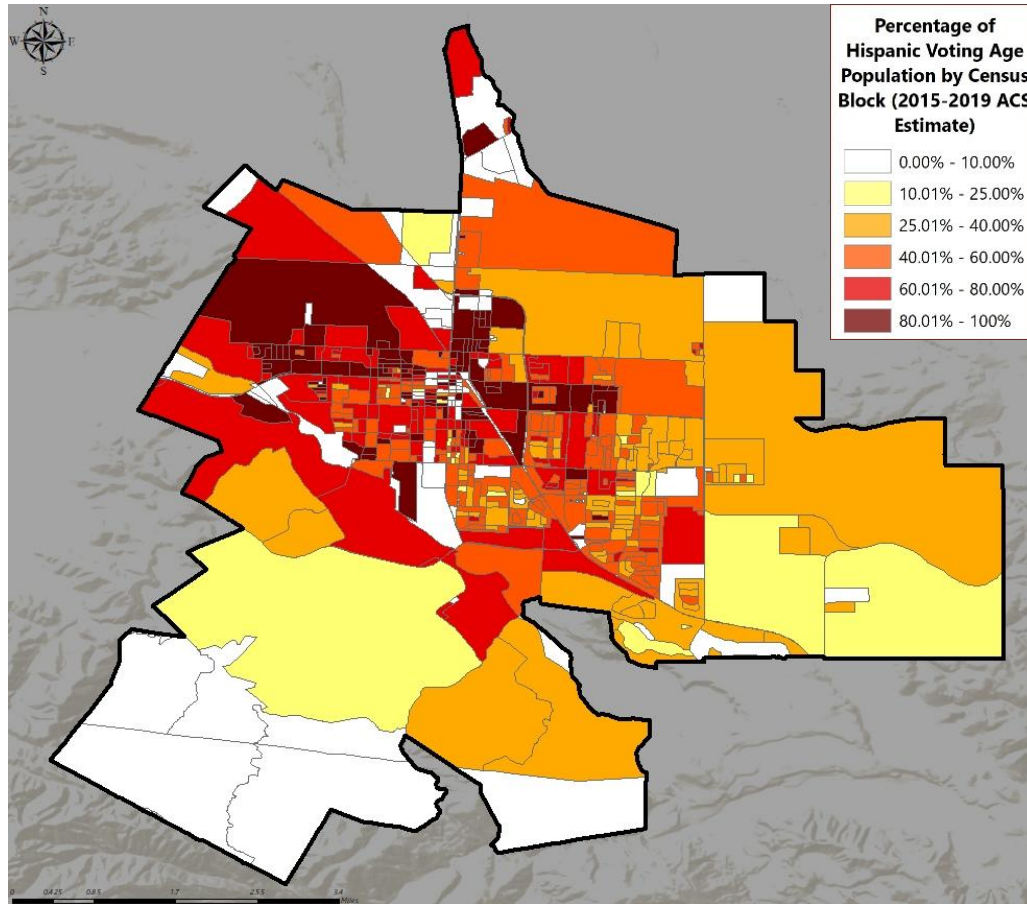
► DISTRICT DEMOGRAPHICS

2020 CENSUS DATA



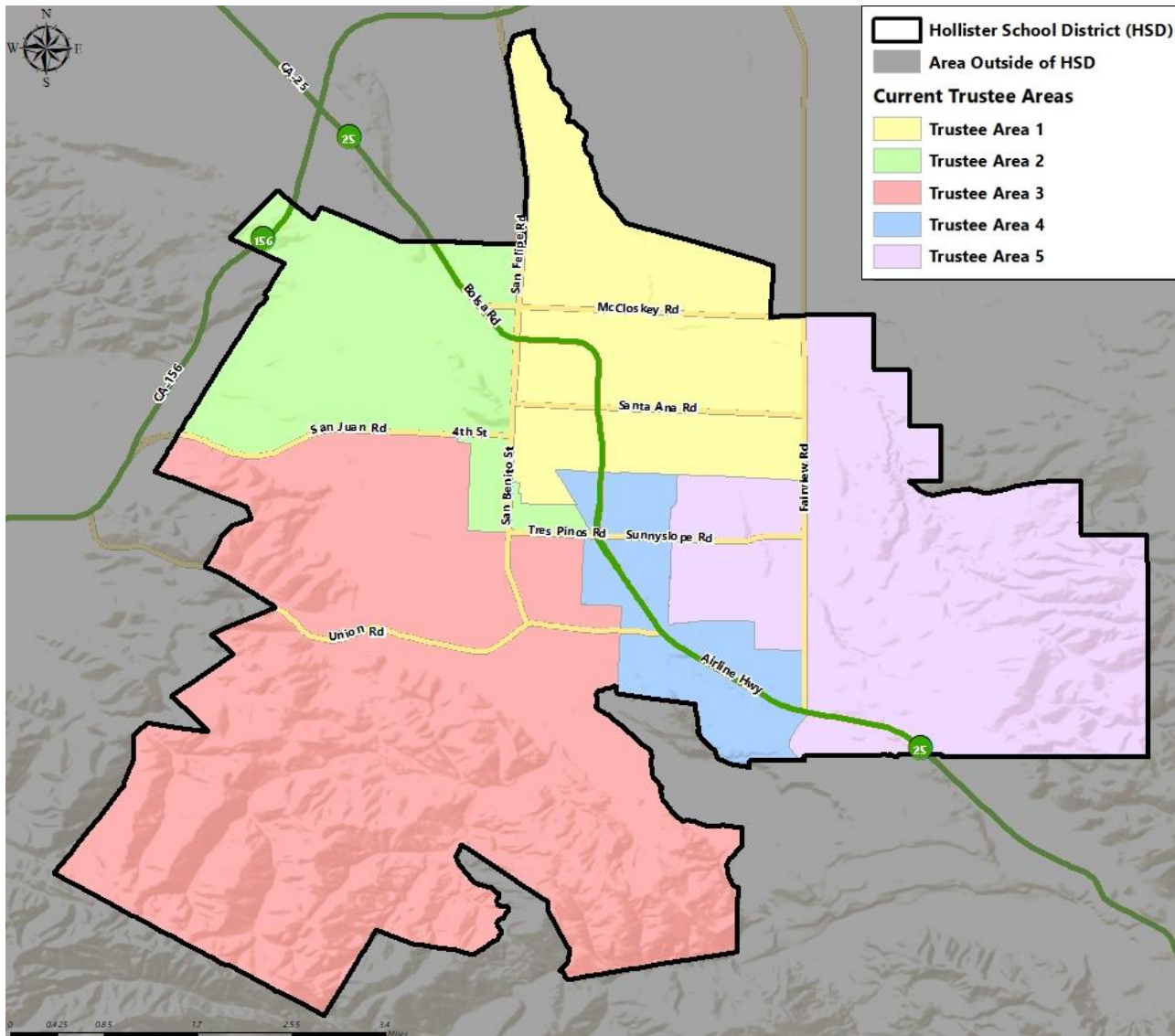
Population	Total Population		Age 18 and over	
	Total	%	Total	%
Hispanic/Latino	33,068	65.5%	22,818	61.6%
White	13,338	26.4%	11,081	29.9%
Black / African American	392	0.8%	322	0.9%
American Indian /Alaska Native	162	0.3%	129	0.3%
Asian	1,823	3.6%	1,504	4.1%
Native Hawaiian /Pacific Islander	100	0.2%	75	0.2%
Other	236	0.5%	160	0.4%
Two or More Races	1,347	2.7%	937	2.5%
Total	50,466	100%	37,026	100%

► DISTRICT DEMOGRAPHICS
CITIZEN VOTING AGE POPULATION ESTIMATES



Population	2015-2019 CVAP	
	Total	%
Hispanic/Latino	16,215	55.5%
White	11,199	38.4%
Black / African American	333	1.1%
American Indian / Alaska Native	98	0.3%
Asian	909	3.1%
Native Hawaiian/ Pacific Islander	14	0.0%
Two or More Races	429	1.5%
Total	29,197	100%

► CURRENT TRUSTEE AREAS



► CURRENT TRUSTEE AREAS

Census 2020 Total Population:	50,466		Ideal Trustee Area Size:		10,093		Total Variance:		14.3%	
TRUSTEE AREA	Trustee Area 1		Trustee Area 2		Trustee Area 3		Trustee Area 4		Trustee Area 5	
TP* vs. CVAP**	TP	CVAP	TP	CVAP	TP	CVAP	TP	CVAP	TP	CVAP
Population	10,095	5,605	9,998	5,046	11,003	5,969	9,555	6,909	9,815	5,668
Population Variance	0.0%	N/A	-0.9%	N/A	9.0%	N/A	-5.3%	N/A	-2.8%	N/A
Hispanic/Latino	74.3%	67.5%	79.1%	74.6%	68.3%	55.1%	53.3%	47.3%	51.4%	37.3%
White	19.1%	27.0%	14.6%	20.7%	23.4%	38.2%	35.9%	44.5%	40.2%	58.0%
Black/African American	0.5%	1.2%	0.6%	1.3%	0.8%	1.8%	1.2%	0.8%	0.9%	0.7%
American Indian/Alaska Native	0.4%	1.2%	0.3%	0.4%	0.2%	0.2%	0.5%	0.0%	0.3%	0.0%
Asian	2.5%	1.4%	2.8%	2.6%	4.1%	3.4%	5.1%	5.0%	3.7%	2.7%
Native Hawaiian/Other Pacific Islander	0.3%	0.0%	0.2%	0.0%	0.3%	0.0%	0.2%	0.0%	0.1%	0.2%
Other	0.5%	N/A	0.6%	N/A	0.3%	N/A	0.6%	N/A	0.4%	N/A
Two or More Races	2.5%	1.7%	1.9%	0.4%	2.6%	1.4%	3.3%	2.5%	3.2%	1.0%

*Total Population; Source: Redistricting Database for California, Published by Statewide Database on September 20, 2021

**Citizen Voting Age Population (CVAP); Source: American Community Survey, 2015–2019 Data

► CONSIDERATIONS IN VOTING AREAS



Each area shall contain nearly equal number of inhabitants



Follow man-made and natural geographic features, as much as possible



Drawn to comply with the Federal Voting Rights Act



Respect incumbency, if possible



Compact and contiguous, as much as possible



Other local considerations



Respect communities of interest, as much as possible



QUESTIONS

A row of yellow school buses is parked in a grassy field. The buses are yellow with black stripes and have "SCHOOL BUS" written on the front. The background is a blue sky with white clouds. The entire image is overlaid with a large, semi-transparent, stylized letter 'S' graphic.