



## ► TRUSTEE AREA SCENARIOS

HOLLISTER SCHOOL DISTRICT

**JANUARY 25, 2022**



**COOPERATIVE**  
**STRATEGIES**  
ASSESS • PLAN • FUND • BUILD

## ► CONSIDERATIONS IN TRUSTEE AREAS



Each area shall contain nearly equal number of inhabitants



Follow man-made and natural geographic features, as much as possible



Drawn to comply with the Federal Voting Rights Act



Respect incumbency, if possible



Compact and contiguous, as much as possible

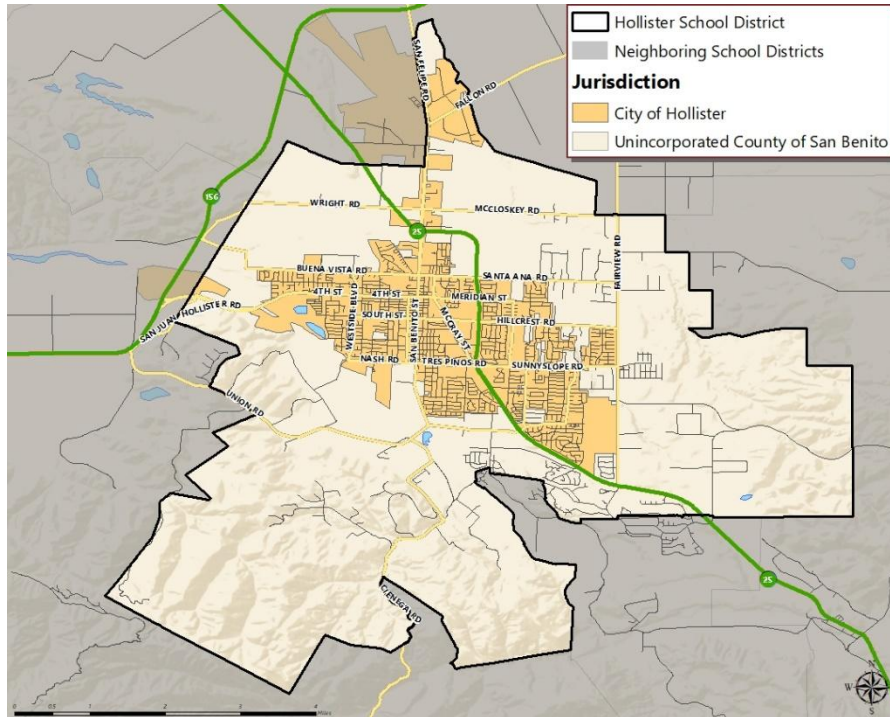


Other local considerations (i.e., school boundaries, locations of school sites)



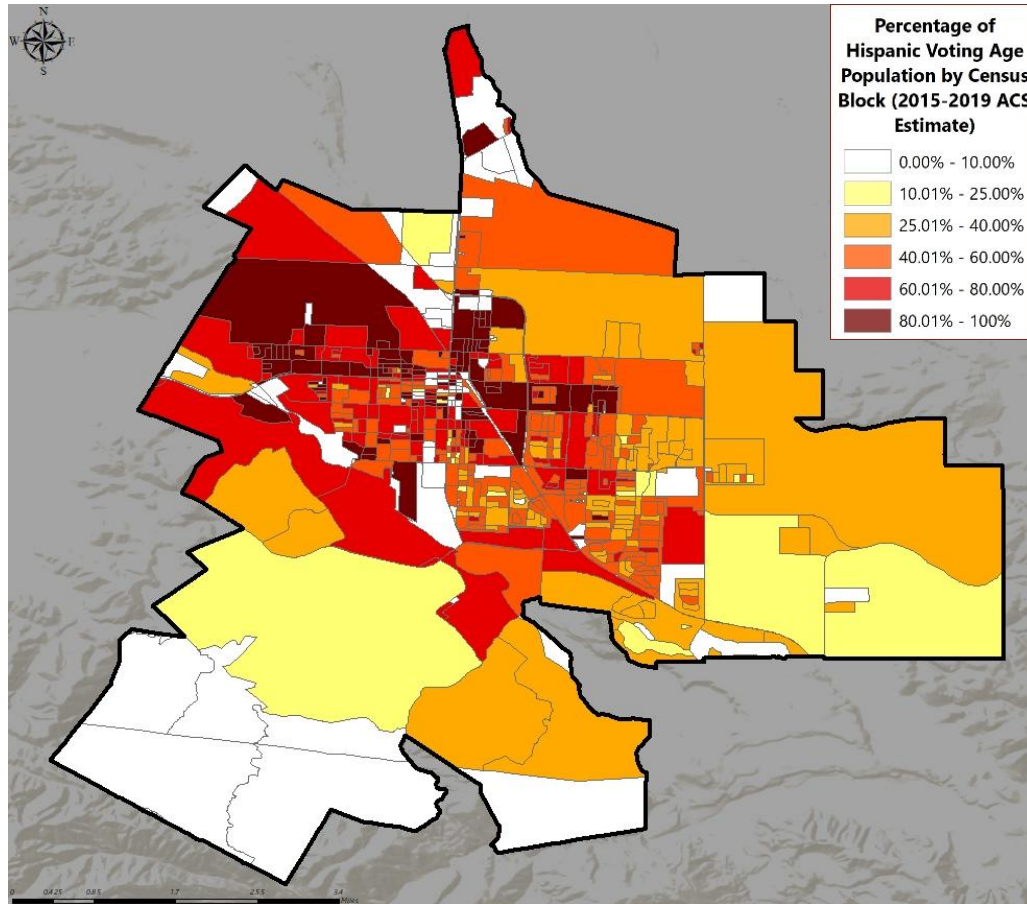
Respect communities of interest, as much as possible

► DISTRICT DEMOGRAPHICS  
2020 CENSUS DATA



Population	Total Population		Age 18 and over	
	Total	%	Total	%
Hispanic/Latino	33,068	65.5%	22,818	61.6%
White	13,338	26.4%	11,081	29.9%
Black / African American	392	0.8%	322	0.9%
American Indian /Alaska Native	162	0.3%	129	0.3%
Asian	1,823	3.6%	1,504	4.1%
Native Hawaiian /Pacific Islander	100	0.2%	75	0.2%
Other	236	0.5%	160	0.4%
Two or More Races	1,347	2.7%	937	2.5%
<b>Total</b>	<b>50,466</b>	<b>100%</b>	<b>37,026</b>	<b>100%</b>

► DISTRICT DEMOGRAPHICS  
CITIZEN VOTING AGE POPULATION ESTIMATES



Population	2015-2019 CVAP	
	Total	%
Hispanic/Latino	16,215	55.5%
White	11,199	38.4%
Black / African American	333	1.1%
American Indian / Alaska Native	98	0.3%
Asian	909	3.1%
Native Hawaiian/ Pacific Islander	14	0.0%
Two or More Races	429	1.5%
<b>Total</b>	<b>29,197</b>	<b>100%</b>

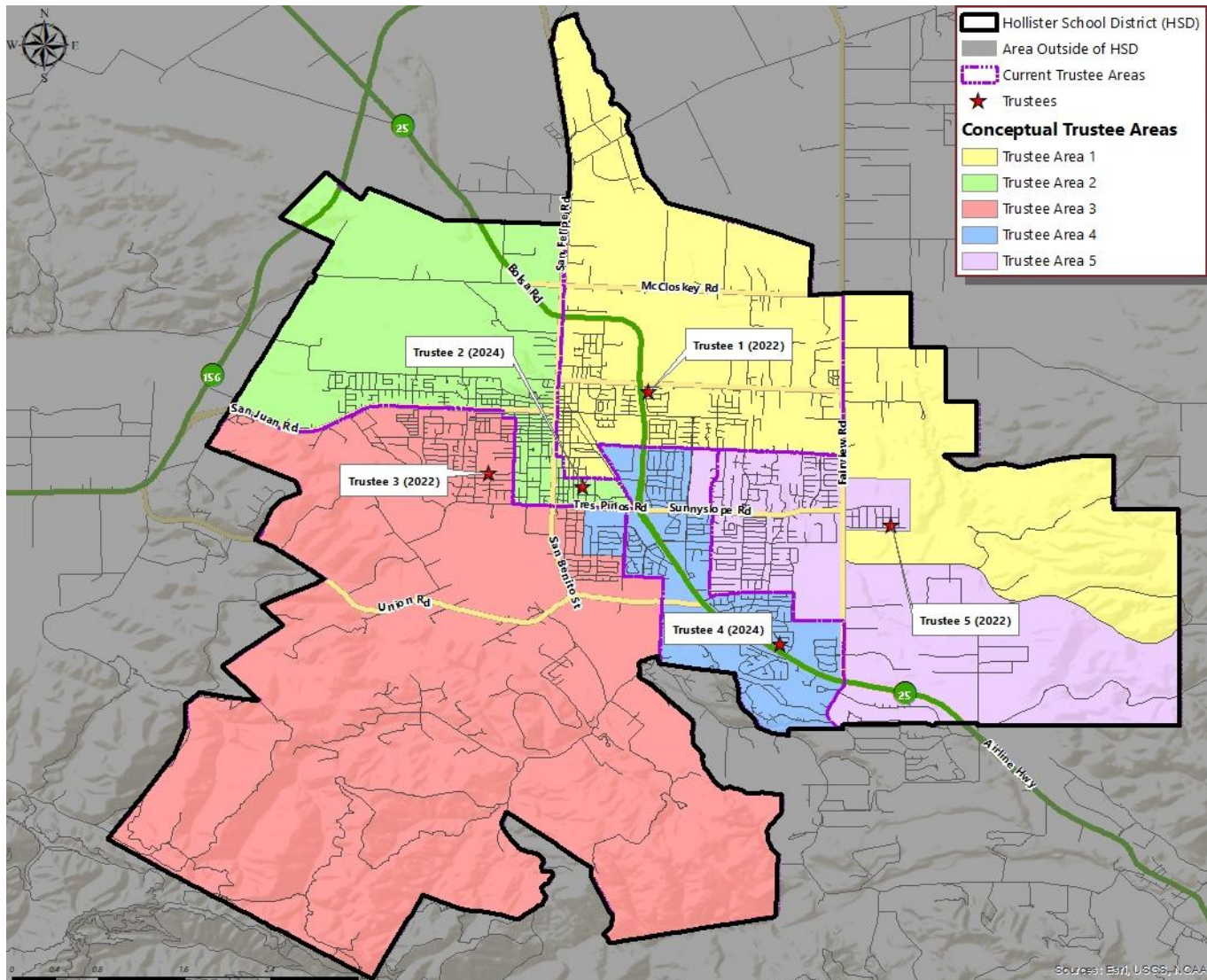
► **CONCEPTUAL TRUSTEE AREAS**  
**SCENARIO CONSIDERATIONS**

- For both scenarios:
- Balancing the total population to try and reach or get close to the ideal area size of 10,093 people per area was the first consideration taken into account.
- Secondly, trying to stay as close to the current trustee area boundaries as possible with only minor changes as needed.



## ► CONCEPTUAL TRUSTEE AREAS

### SCENARIO 1



► DEMOGRAPHICS  
SCENARIO 1

Total Population:	50,466	Ideal Trustee Area Size:	10,093	Variance:	4.1%
-------------------	--------	--------------------------	--------	-----------	------

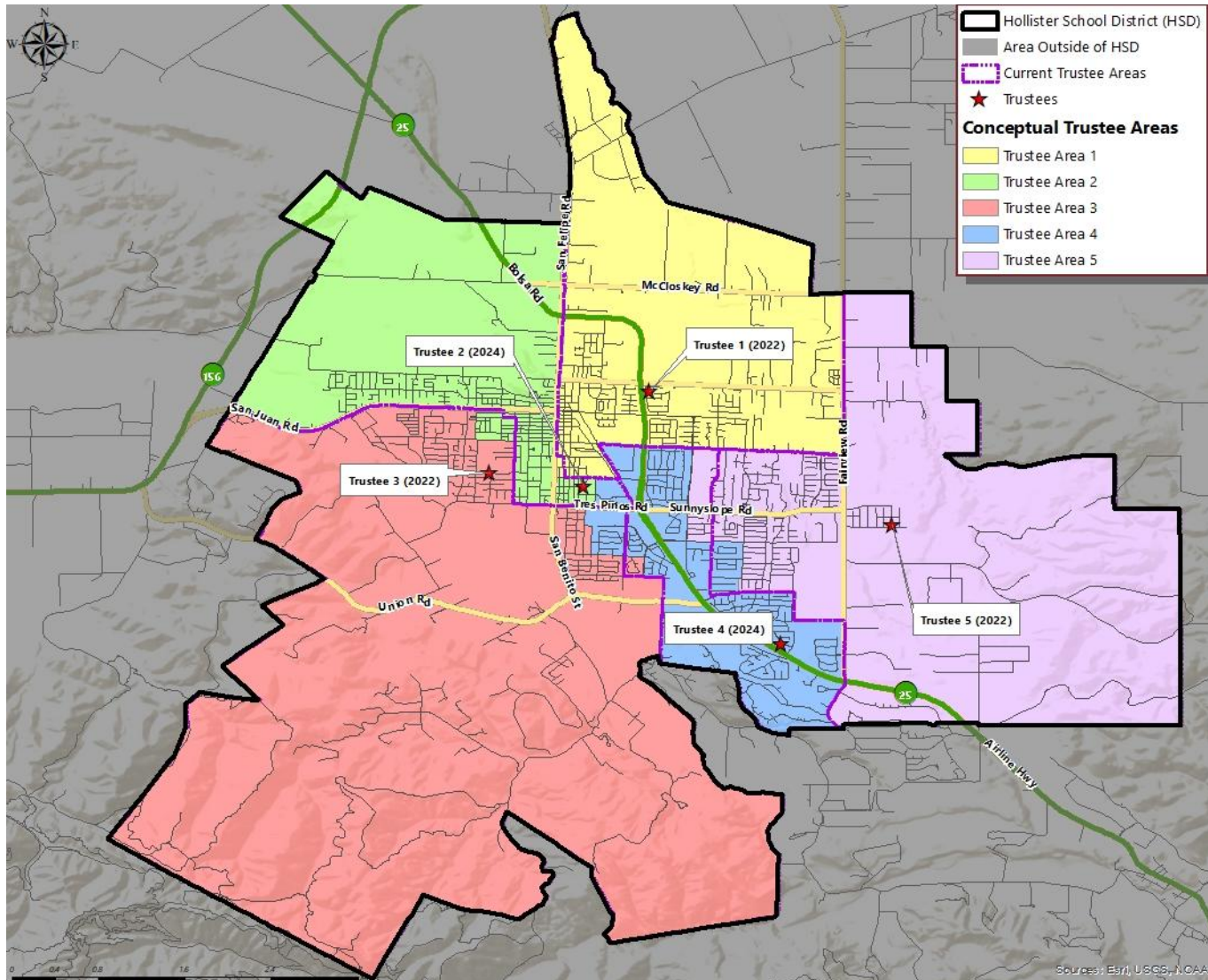
TRUSTEE AREA	Trustee Area 1		Trustee Area 2		Trustee Area 3		Trustee Area 4		Trustee Area 5	
TP* vs. CVAP**	TP	CVAP	TP	CVAP	TP	CVAP	TP	CVAP	TP	CVAP
Population	10,235	5,683	9,998	5,046	10,309	5,559	10,030	7,212	9,894	5,697
Population Variance	1.4%	N/A	-0.9%	N/A	2.1%	N/A	-0.6%	N/A	-2.0%	N/A
Hispanic/Latino	73.8%	66.9%	79.1%	74.6%	69.9%	56.3%	52.4%	46.5%	51.9%	37.9%
White	19.6%	27.6%	14.6%	20.7%	22.2%	37.3%	36.5%	44.9%	39.7%	57.4%
Black/African American	0.5%	1.2%	0.6%	1.3%	0.7%	1.8%	1.3%	0.9%	0.9%	0.7%
American Indian/Alaska Native	0.4%	1.2%	0.3%	0.4%	0.2%	0.2%	0.4%	0.0%	0.3%	0.0%
Asian	2.5%	1.4%	2.8%	2.6%	3.9%	3.1%	5.3%	5.2%	3.7%	2.7%
Native Hawaiian/Other Pacific Islander	0.3%	0.0%	0.2%	0.0%	0.3%	0.0%	0.2%	0.0%	0.1%	0.2%
Other	0.5%	0.0%	0.6%	0.0%	0.3%	0.0%	0.6%	0.0%	0.4%	0.1%
Two or More Races	2.5%	1.7%	1.9%	0.4%	2.6%	1.4%	3.3%	2.5%	3.2%	1.0%

\*Total Population; Source: Redistricting Database for California, Published by Statewide Database on September 20, 2021

\*\*Citizen Voting Age Population (CVAP); Source: American Community Survey, 2015-2019 Data

## ► CONCEPTUAL TRUSTEE AREAS

### SCENARIO 2





► **DEMOGRAPHICS**  
**SCENARIO 2**

Total Population:	50,466	Ideal Trustee Area Size:	10,093	Variance:	2.4%
-------------------	--------	--------------------------	--------	-----------	------

TRUSTEE AREA	Trustee Area 1		Trustee Area 2		Trustee Area 3		Trustee Area 4		Trustee Area 5	
TP* vs. CVAP**	TP	CVAP	TP	CVAP	TP	CVAP	TP	CVAP	TP	CVAP
Population	10,219	5,675	10,222	5,153	9,995	5,387	10,052	7,220	9,978	5,762
Population Variance	1.2%	N/A	1.3%	N/A	-1.0%	N/A	-0.4%	N/A	-1.1%	N/A
Hispanic/Latino	74.4%	67.4%	78.9%	74.1%	69.0%	55.9%	52.1%	44.8%	52.9%	40.3%
White	19.0%	27.1%	14.8%	21.3%	22.9%	37.5%	37.1%	47.2%	38.7%	54.5%
Black/African American	0.5%	1.2%	0.6%	1.2%	0.8%	1.9%	1.2%	0.7%	0.9%	0.8%
American Indian/Alaska Native	0.4%	1.2%	0.3%	0.4%	0.2%	0.2%	0.4%	0.0%	0.3%	0.0%
Asian	2.5%	1.4%	2.8%	2.3%	4.0%	3.3%	5.2%	5.3%	3.7%	2.6%
Native Hawaiian/Other Pacific Islander	0.3%	0.0%	0.2%	0.0%	0.3%	0.0%	0.1%	0.0%	0.1%	0.2%
Other	0.6%	0.0%	0.5%	0.0%	0.3%	0.0%	0.6%	0.0%	0.4%	0.1%
Two or More Races	2.5%	1.7%	1.9%	0.7%	2.6%	1.2%	3.3%	2.0%	3.1%	1.5%

\*Total Population; Source: Redistricting Database for California, Published by Statewide Database on September 20, 2021

\*\*Citizen Voting Age Population (CVAP); Source: American Community Survey, 2015-2019 Data



QUESTIONS

A row of yellow school buses is parked in a grassy field under a cloudy sky. The buses are slightly out of focus, and the overall image has a dark, moody tone. A large, stylized, semi-transparent letter 'S' graphic is overlaid on the image, serving as a background for the text 'QUESTIONS'.